

EWM Locations in Round & Little Round Lakes

SAWYER COUNTY, WISCONSIN, JULY 21-21, 2017

Sara Hatleli

AQUATIC PLANT & HABITAT SERVICES LLC | SARAHATLELI97@GMAIL.COM

Abstract

Eurasian watermilfoil (EWM) locations were documented in Round and Little Round Lakes (Sawyer County, WI) on July 20-21, 2017. Observations were made from a boat cruising along shore between the 5- and 10-foot depth contours. Areas where EWM was dominant were recorded as polygons and those areas with individual or intermittent EWM were documented as EWM points (referred to as “intermittent” on the maps). Rake samples were taken to verify EWM presence. EWM was intermittent in many locations, especially in Richardson Bay (Maps 3 and 4) and Little Round Lake (Maps 5-8). Twenty-six polygons were mapped and are referenced as A-17 through Z-17 with a total area of 8.543 acres (6.480 in Round and 2.063 in Little Round). Thirteen maps were created for use by DASH professionals to remove EWM from Round and Little Round in August 2017.

Table 1 – EWM Polygon Attributes

EWM Polygon ID	Depth	Area (ac)
A-17	4-13 ft	1.628
B-17	8 ft	0.075
C-17	5-10 ft	0.194
D-17	8 ft	0.049
E-17	4-12 ft	0.643
F-17	5 ft	0.058
G-17	12 ft	0.298
H-17	5-8 ft	1.227
I-17	10 ft	0.056
J-17	4-7 ft	0.012
K-17	3-6 ft	1.061
L-17	2-6 ft	0.434
M-17	2-4 ft	0.114
N-17	6-8 ft	0.533
O-17	10-14 ft	0.224
P-17	6-8 ft	0.064
Q-17	6-7 ft	0.034
R-17	2-3 ft	0.037
S-17	4-9 ft	0.158
T-17	4-8 ft	0.127
U-17	6-8 ft	0.886
V-17	3-6 ft	0.132
W-17	8-12 ft	0.045
X-17	4-5 ft	0.219
Y-17	8-10 ft	0.101
Z-17	8-12 ft	0.134

Figure 1 – Round Lake & Little Round Lake EWM Map Key	2
Figure 2 – Map 1, Hinton Bay.....	3
Figure 3 – Map 2, Edgewater Bay	4
Figure 4 – Map 3, North Richardson Bay	5
Figure 5 – Map 4, South Richardson Bay.....	6
Figure 6 – Map 5, North Central Little Round Lake	7
Figure 7 – Map 6, Northeast Little Round Lake	8
Figure 8 – Map 7, Southeast Little Round Lake.....	9
Figure 9 – Map 8, South Little Round Lake	10
Figure 10 – Map 9, Musky Bay.....	11
Figure 11 – Map 10, South of Musky Bay.....	12
Figure 12 – Map 11, North Musky Bay	13
Figure 13 – Map 12, Leder & Schoolhouse Bays	14

Figure 1 – Round Lake & Little Round Lake EWM Map Key

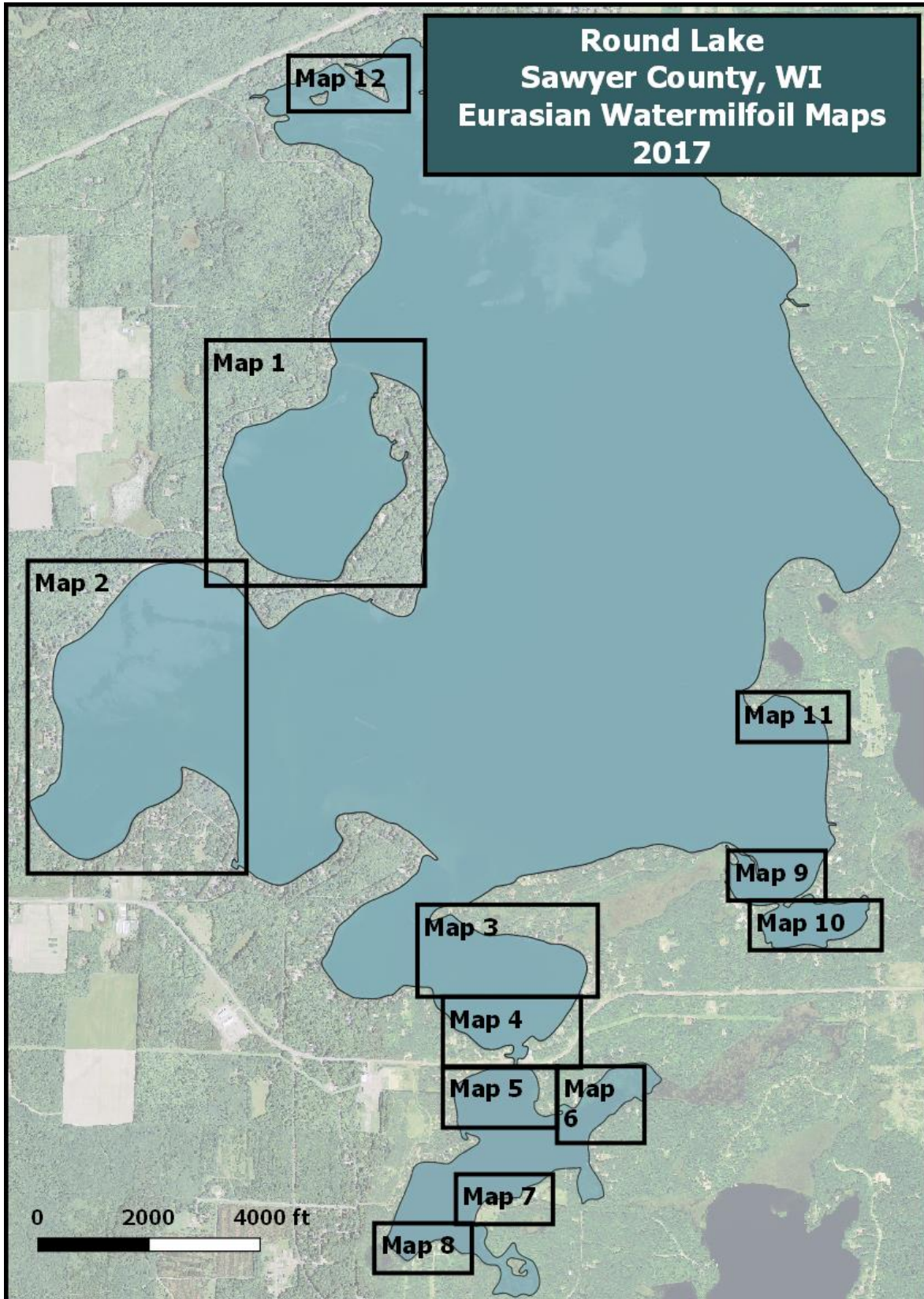


Figure 2 – Map 1, Hinton Bay

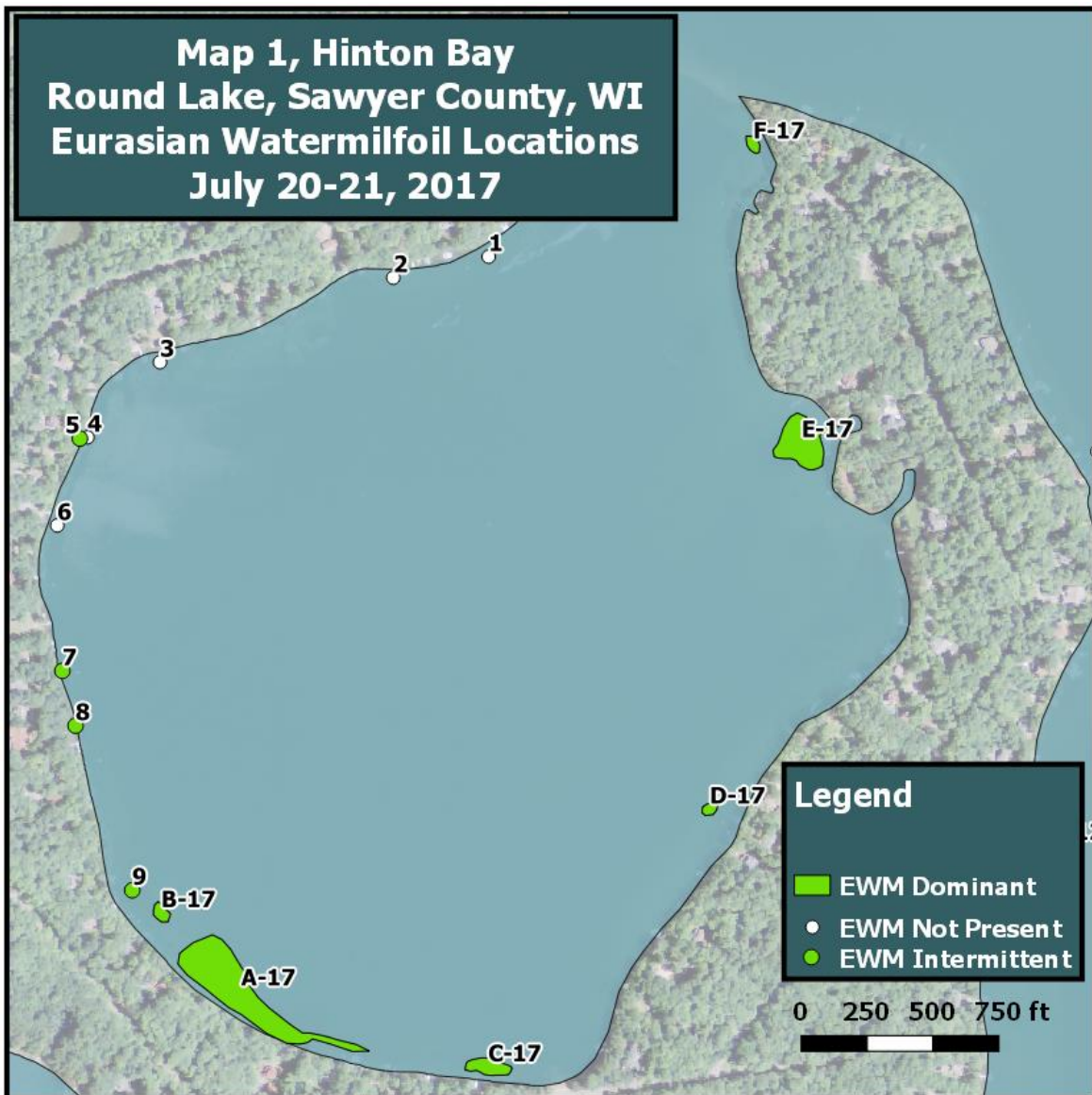


Figure 3 – Map 2, Edgewater Bay

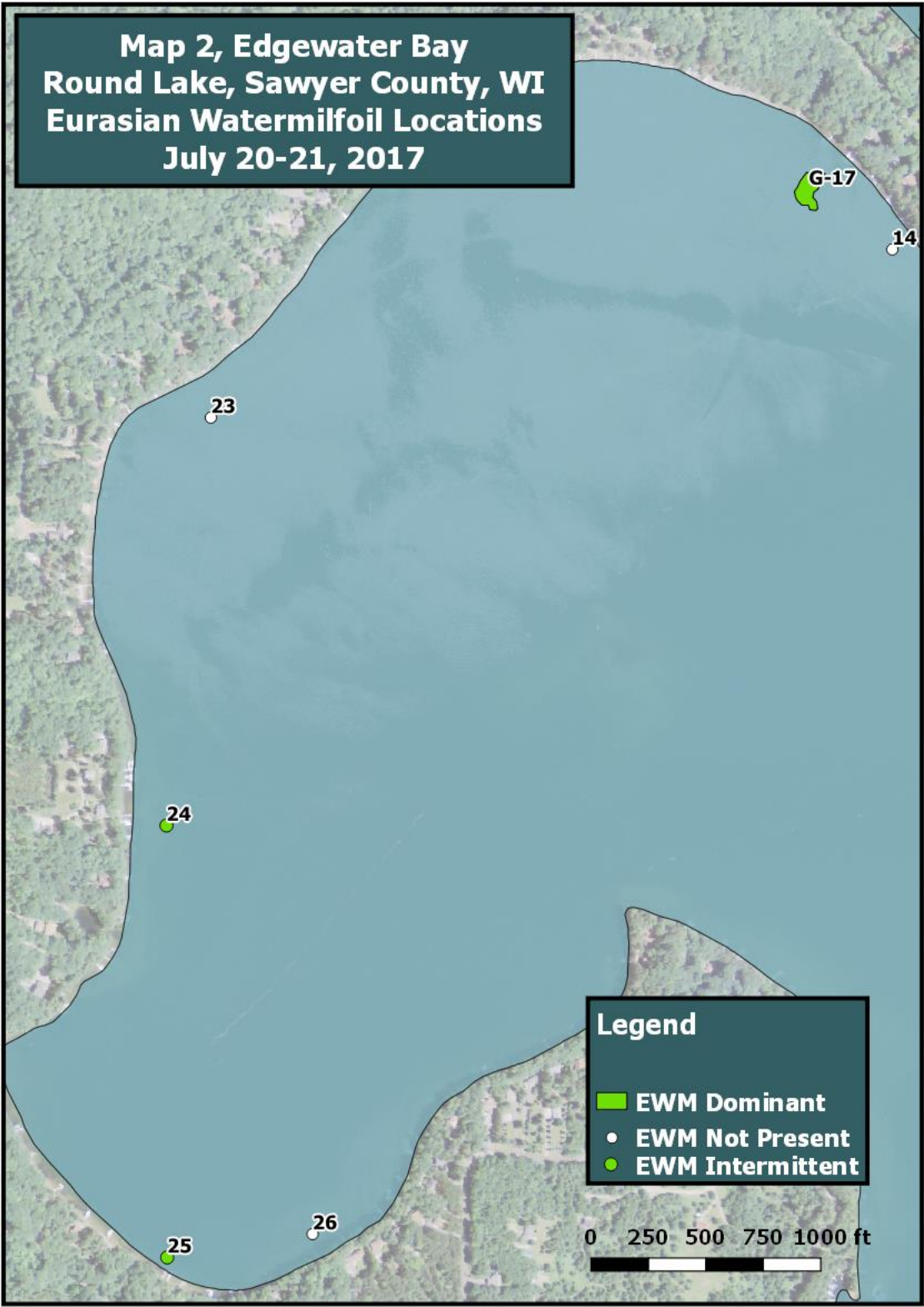


Figure 4 – Map 3, North Richardson Bay

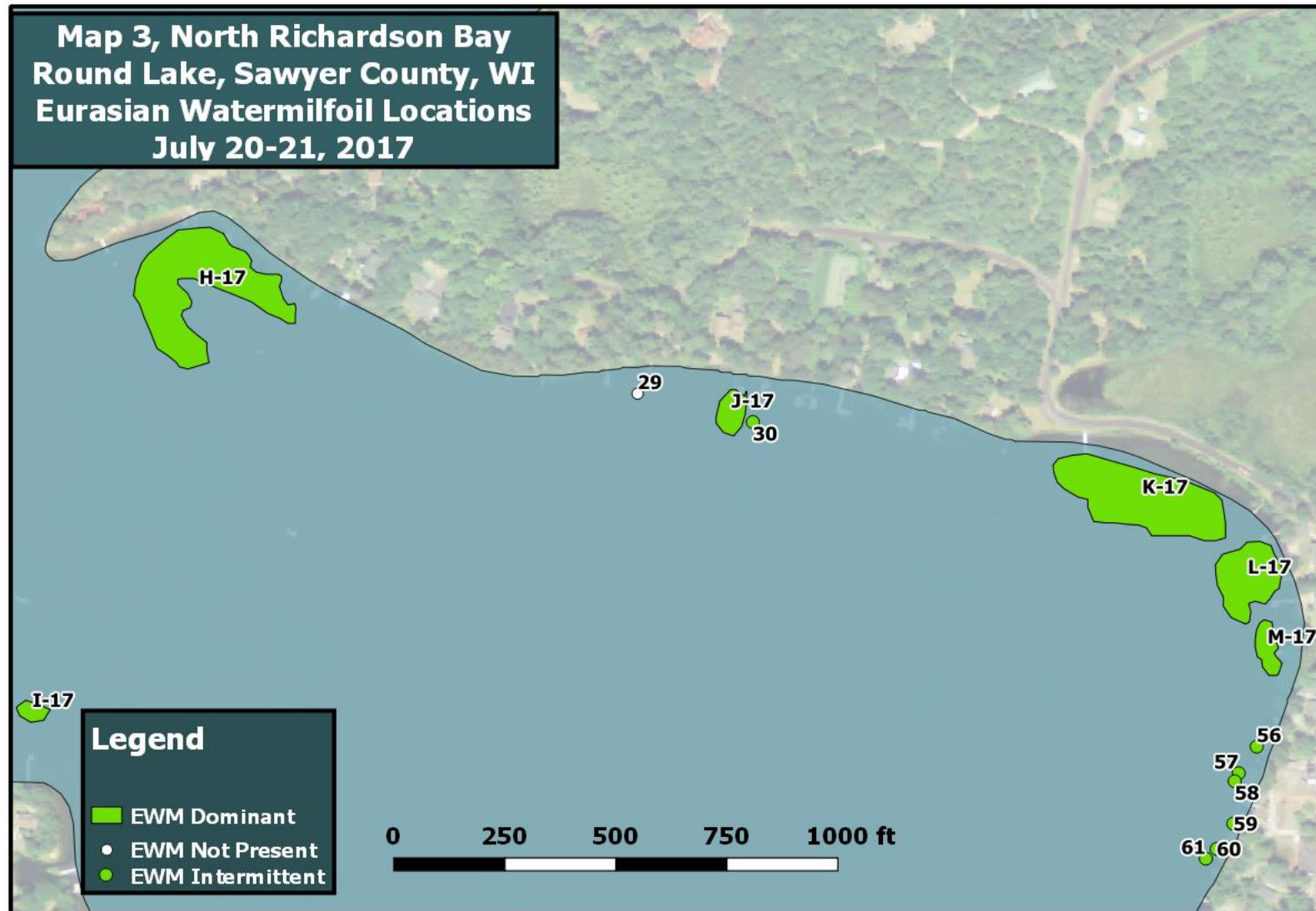


Figure 5 – Map 4, South Richardson Bay

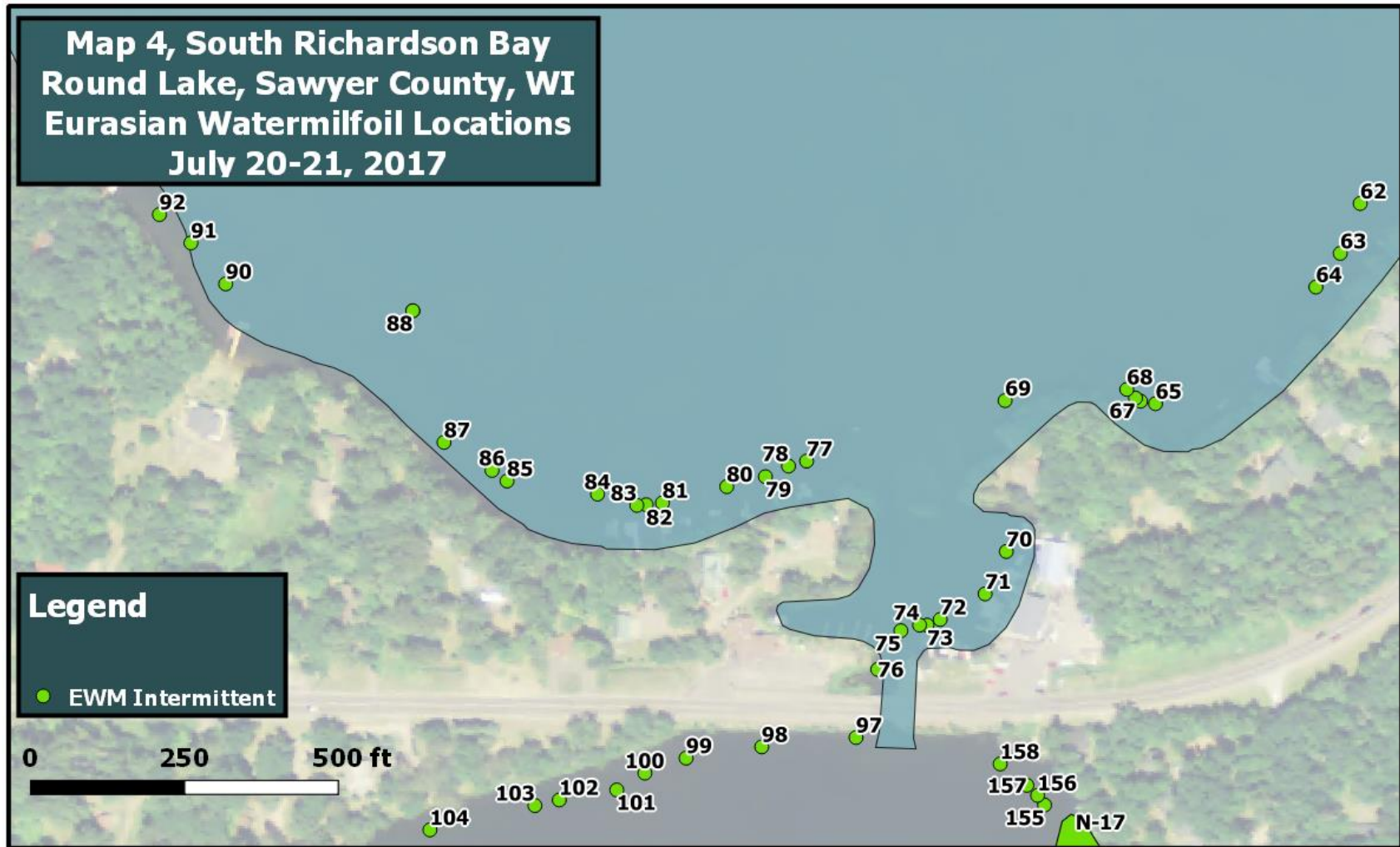


Figure 6 – Map 5, North Central Little Round Lake

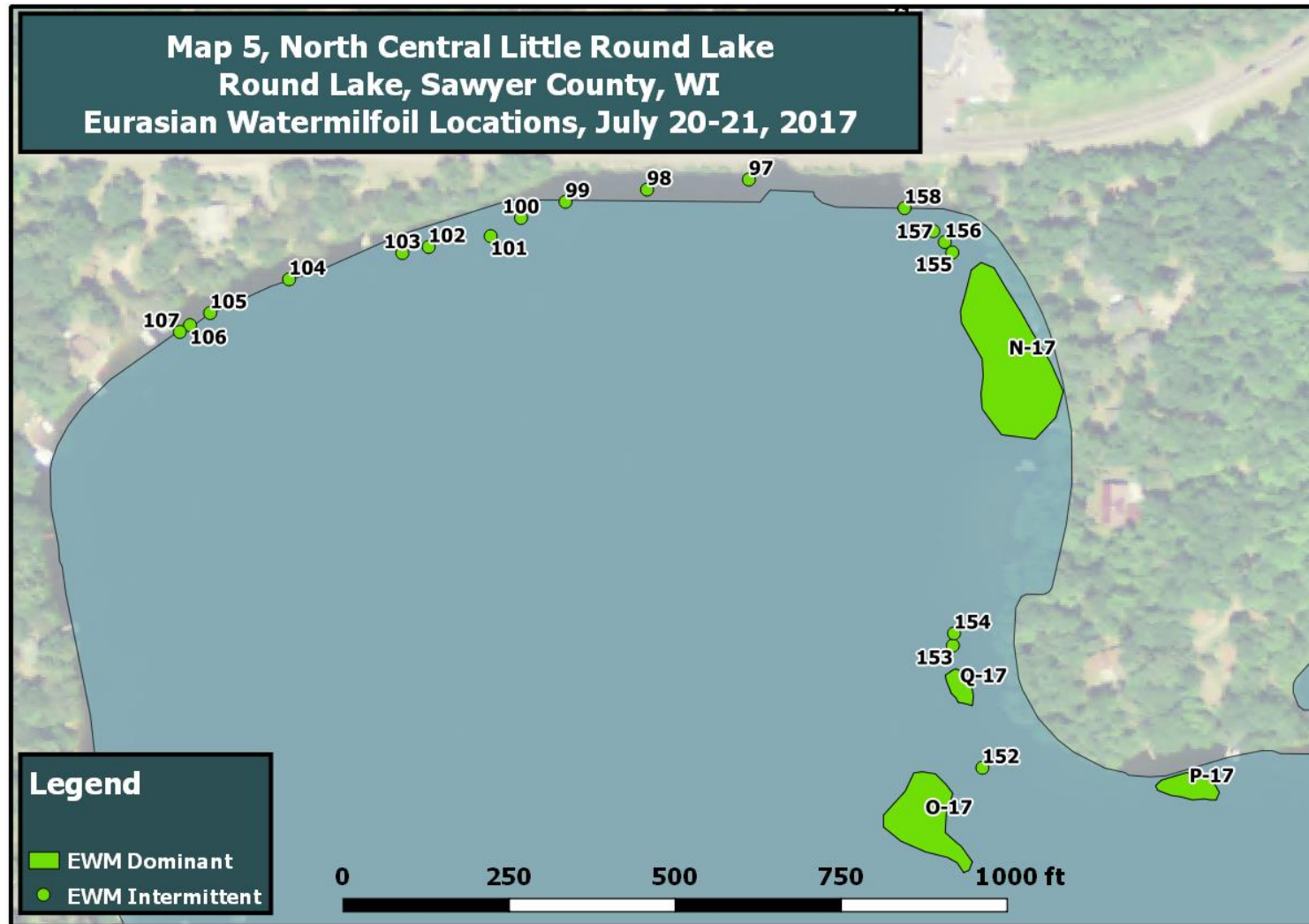


Figure 7 – Map 6, Northeast Little Round Lake

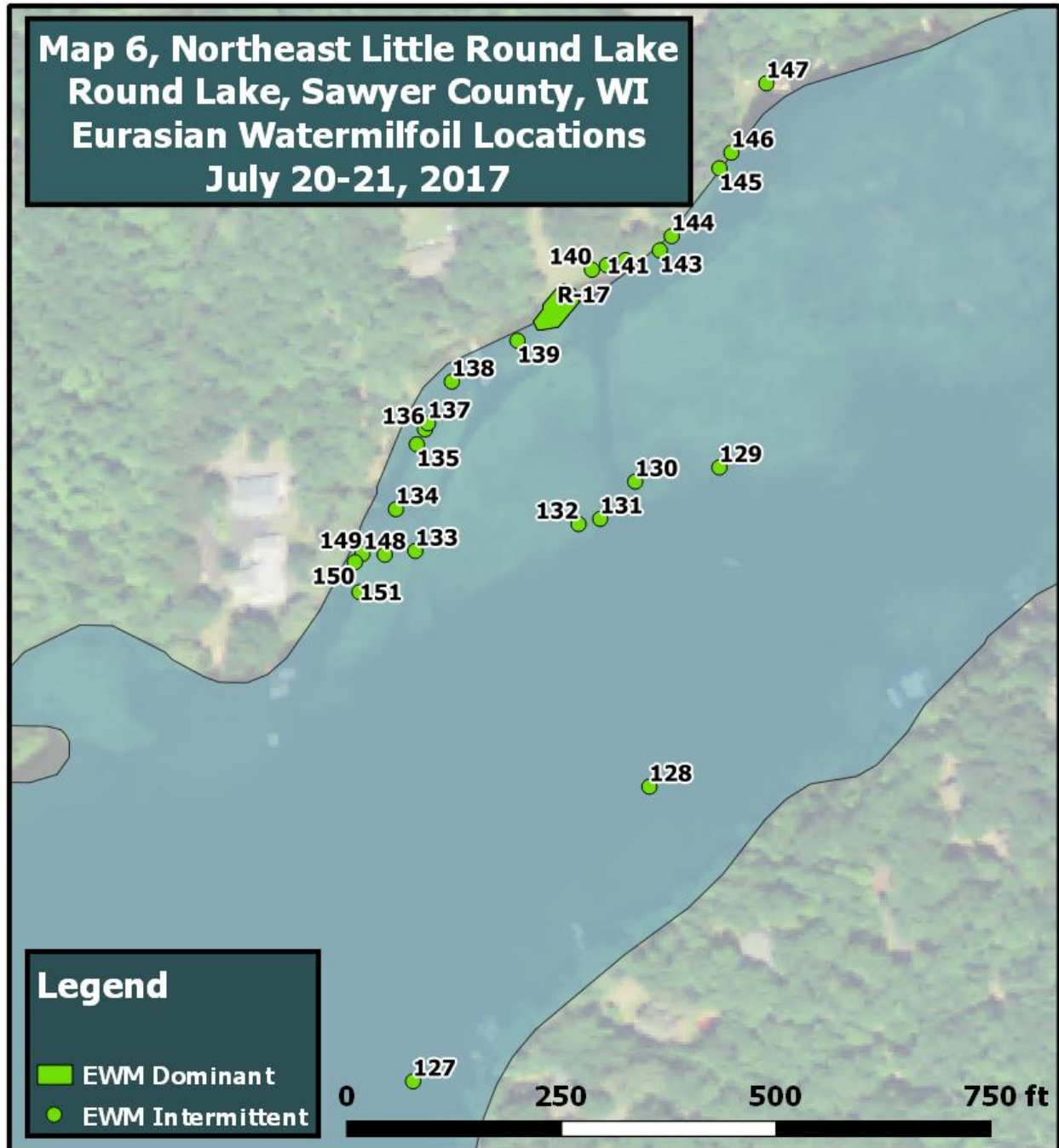


Figure 8 – Map 7, Southeast Little Round Lake



Figure 9 – Map 8, South Little Round Lake

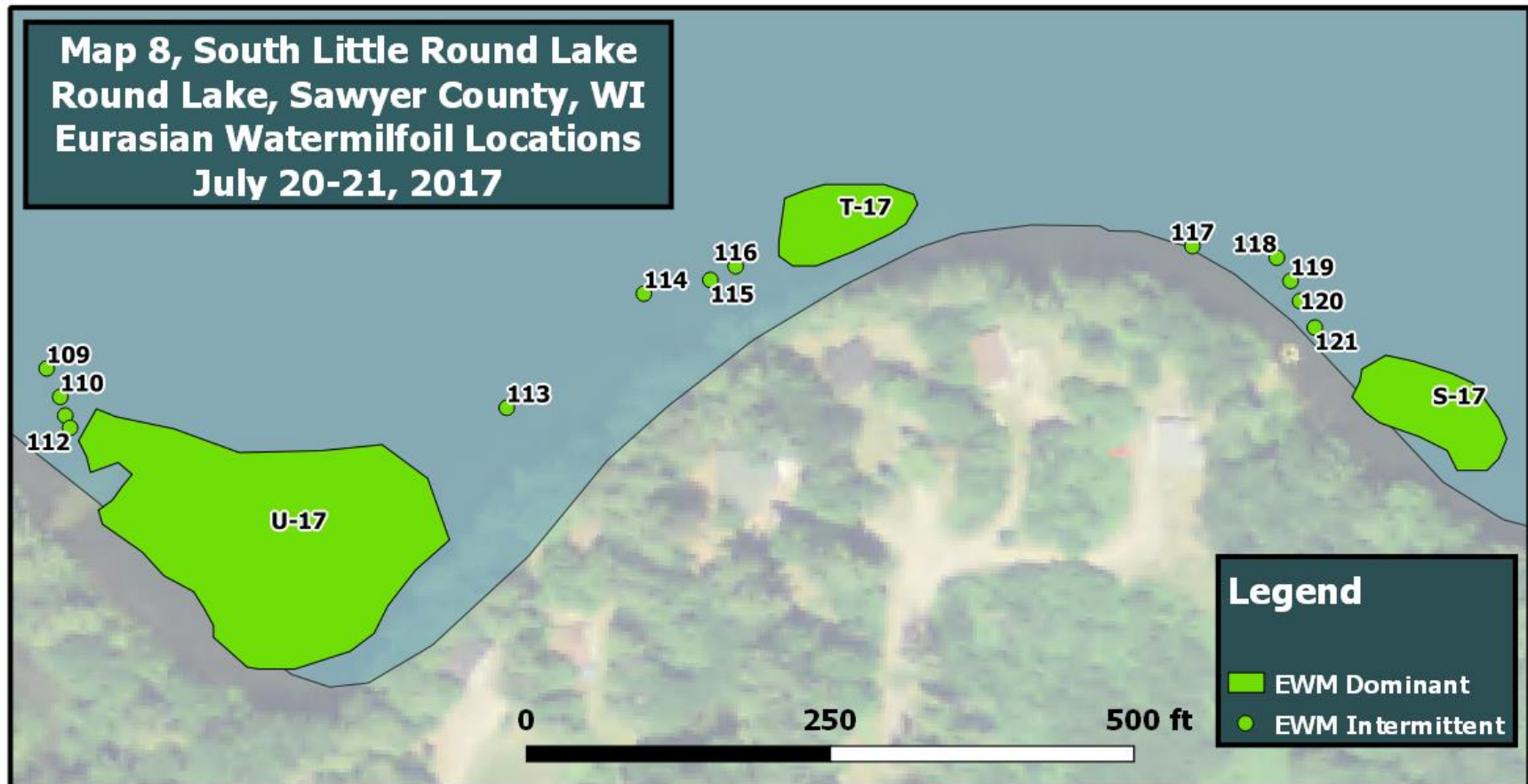


Figure 10 – Map 9, Musky Bay

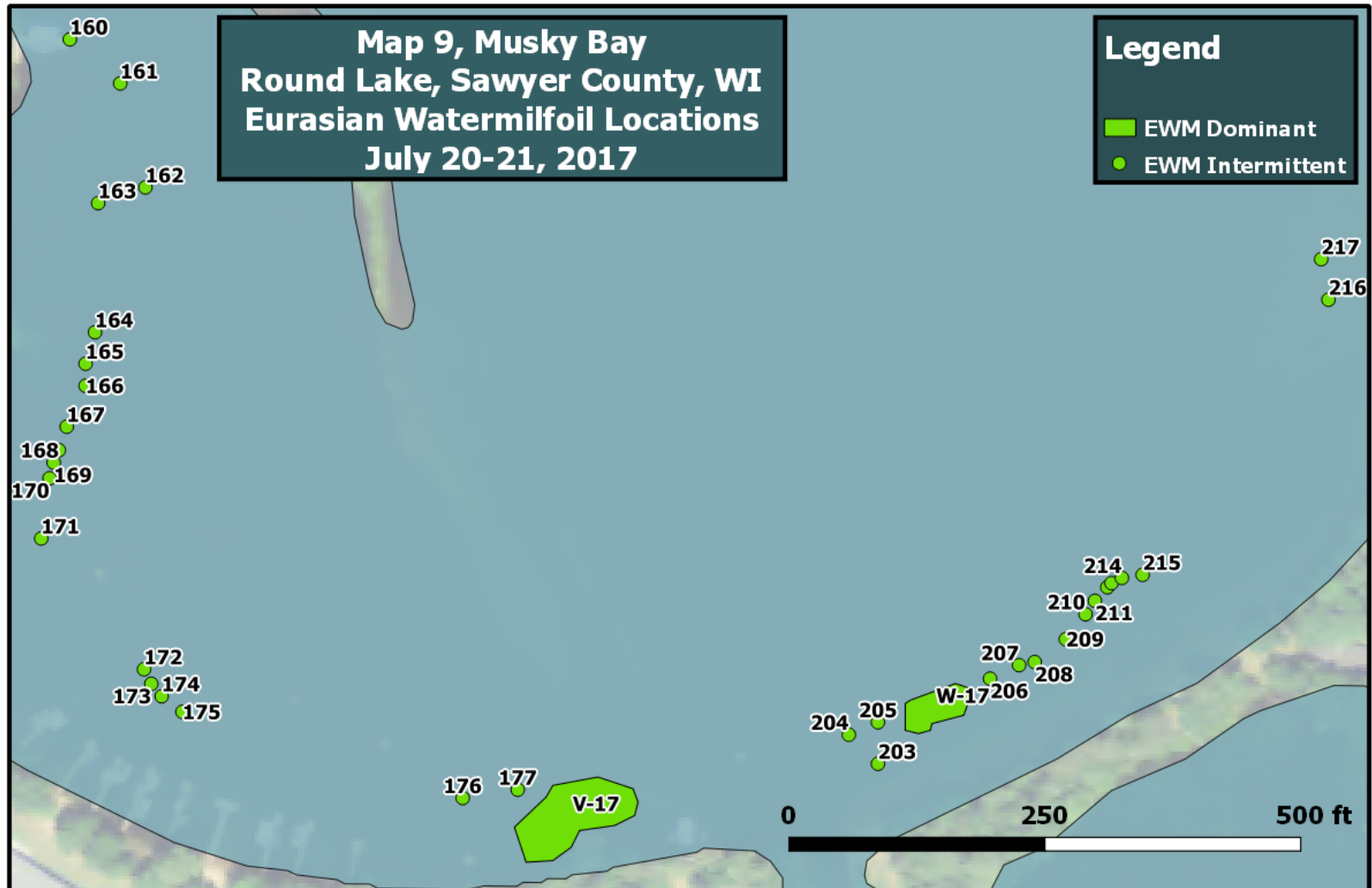


Figure 11 – Map 10, South of Musky Bay

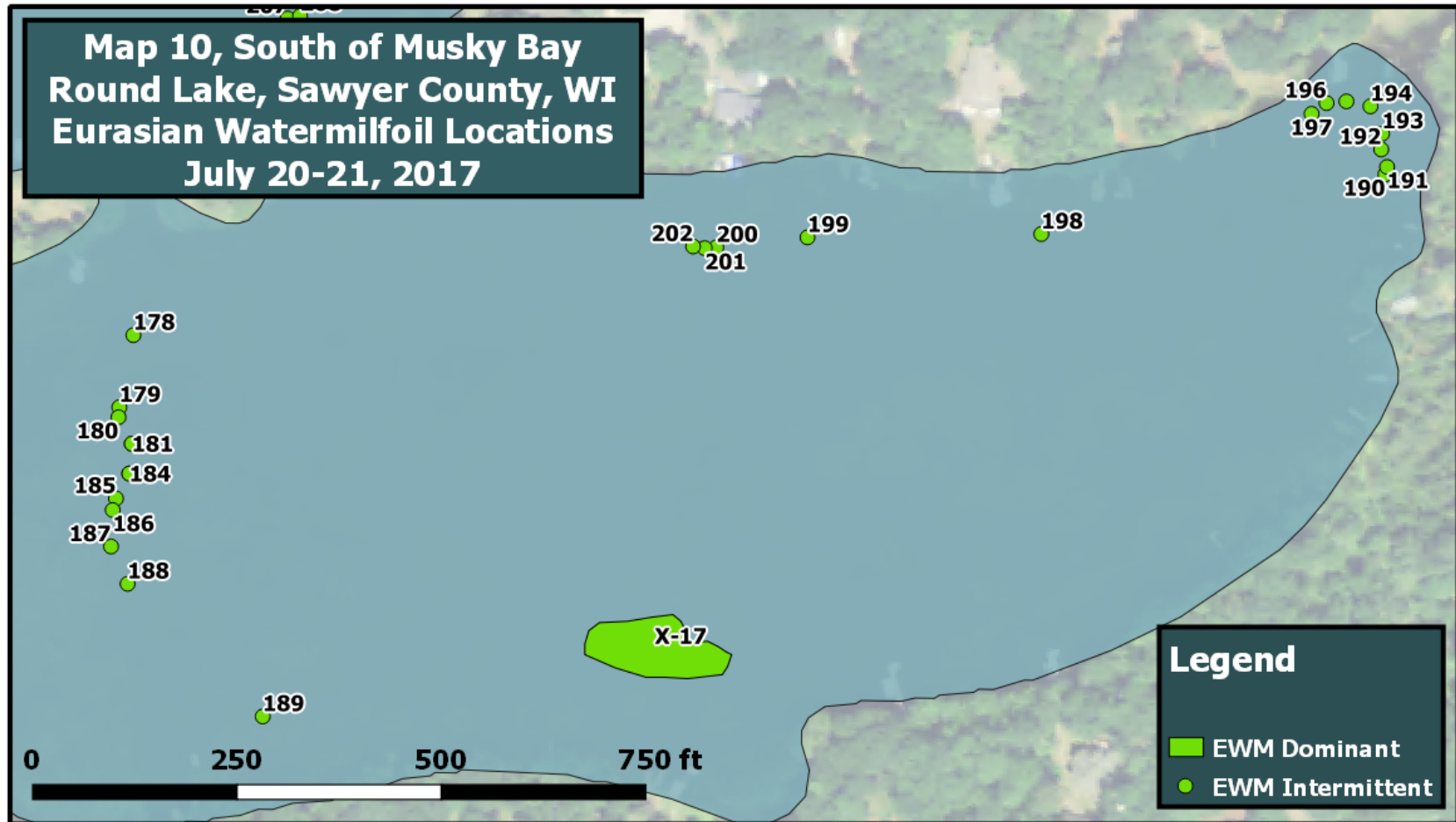


Figure 12 – Map 11, North Musky Bay

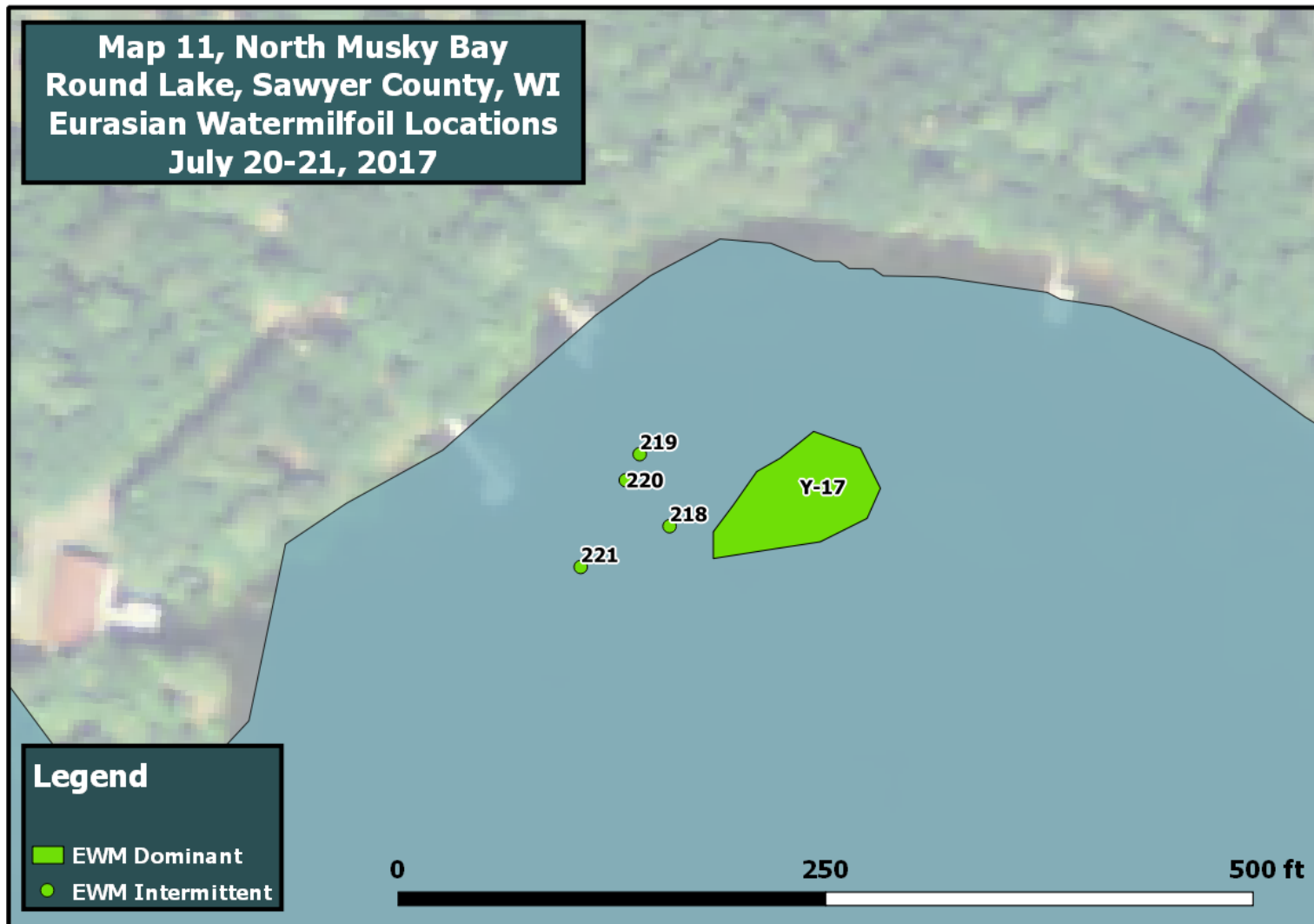


Figure 13 – Map 12, Leder & Schoolhouse Bays

